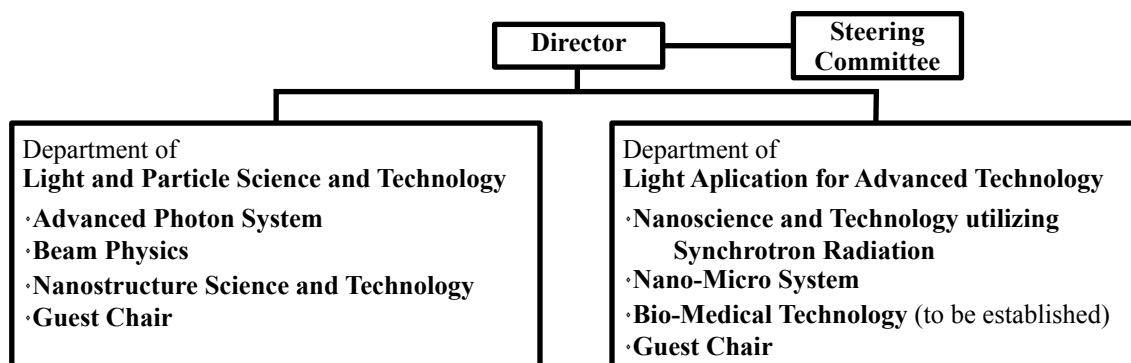


# The Organization of Laboratory of Advanced Science and Technology for Industry University of Hyogo

---

## The organization



## Staff (FY 2011)

### Research and faculty staff

MATSUI Shinji, Professor, Director  
KINOSHITA Hiroo, Professor  
MIYAMOTO Shuji, Professor  
KANDA Kazuhiro, Professor  
UTSUMI Yuichi, Professor  
NIIBE Masahito, Associate Professor  
SHOJI Yoshihiko, Associate Professor  
WATANABE Takeo, Associate Professor  
HARUYAMA Yuichi, Associate Professor  
AMANO Sho, Research Associate  
HASHIMOTO Satoshi, Research Associate  
NODA Daiji, Research Associate  
HARADA Tetsuo, Research Associate

### Specially appointed staff

MOCHIZUKI Takayasu, Professor  
HATTORI Tadashi, Professor

### Guest staff

OHOKUMA Haruo, Professor  
TAKAHASHI Yukio, Associate Professor  
NAGATA Yutaka, Associate Professor

### Administrative staff

MUREI Masatoshi, General Manager  
KOGA Hitomi, Manager  
MIYAMOTO Ken-ichi, Chief  
YOKOYAMA Yuka, CAST  
KAMIYA Miki, CAST  
YAMAMOTO Keiko, CAST  
KANATANI Naoko, NewSUBARU  
NAKAMURA Youko, NewSUBARU  
MORIGUCHI Miyuki, Harima Forum of  
Science and Technology for 21st Century

### Open advanced research facilities initiative staff

TERASAWA Mititaka, NewSUBARU  
MOTOYAMA Muneyuki, NewSUBARU  
FUKUOKA Takao, NewSUBARU  
HORIKAWA Ken, NewSUBARU  
MIYAHARA Yoshikazu, NewSUBARU  
ISHIKAWA Kazuko, NewSUBARU

## Contact address

### CAST (Center of Advanced Science and Technology, Hyogo)

3-1-2 Kouto, Kamigori-cho, Ako-gun, Hyogo, 678-1205 JAPAN.  
T:+81-791-58-0249 F:+81-791-58-0242

### NewSUBARU Synchrotron Radiation Facility

1-1-2 Kouto, Kamigori-cho, Ako-gun, Hyogo, 678-1205 JAPAN.  
T:+81-791-58-2503 F:+81-791-58-2504

**Web URL** <http://www.lasti.u-hyogo.ac.jp/>, <http://www.lasti.u-hyogo.ac.jp/NS/>

**e-Mail** [lasti@lasti.u-hyogo.ac.jp](mailto:lasti@lasti.u-hyogo.ac.jp)

**Access** <http://www.lasti.u-hyogo.ac.jp/NS-en/access/>